

State of Wyoming Corner Record

(In compliance with the *CORNER PERPETUATION AND FILING ACT*, Wyoming Statutes, 1997, Section 33-29-140, et seq., and the Rules and Regulations of the Board of Registration for Professional Engineers and Professional Land Surveyors)

Reverse side of this form may be used if more space is needed.

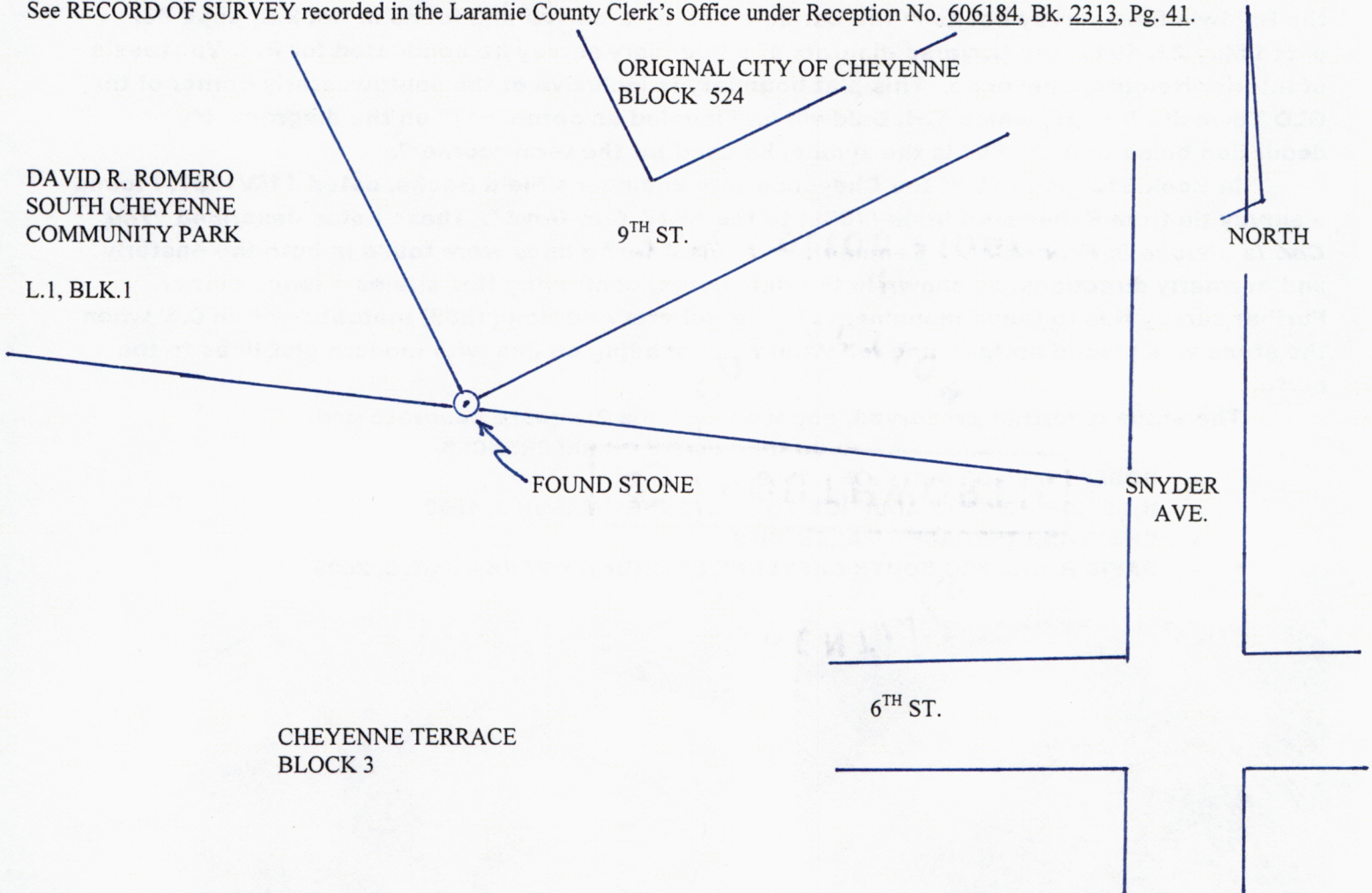
Record of original survey and citation of source of historical information (if corner is lost or obliterated). Description of corner monumentation evidence found and/or monument and accessories established to perpetuate the location of this corner. Sketch of relative location of monument, accessories, and reference points with course and distance to adjacent corner(s) (if determined in this survey). Method and rationale for reestablishment of lost or obliterated corner.

The General Land Office Townsite Survey for the "Survey of Cheyenne City" was issued under Contract No. 4 dated July 18, 1870; completed by Henry G. Hay and John B. Thomas, U.S. Deputy Surveyors on July 30, 1870; approved by Silas Reed, Surveyor General, Wyoming Territory on Aug. 11, 1870; presently recorded in the office of the U.S. Bureau of Land Management, Wyoming.

RECORD: SOUTHWEST CORNER - Not described in the GLO notes of record.

FOUND: SEE - SURVEYOR'S REPORT on following page.

See RECORD OF SURVEY recorded in the Laramie County Clerk's Office under Reception No. 606184, Bk. 2313, Pg. 41.



Date of Field Work: July 2011 Office Reference: _____

CROSS INDEX DIAGRAM

1	2	3	4	5	6	7	8	9	10	11	12	13	14	15	16	17	18	19	20	21	22	23	24	25	
A																									A
B																									B
C																									C
D																									D
E																									E
F																									F
G																									G
H																									H
J																									J
K																									K
L																									L
M																									M
N																									N
O																									O
P																									P
Q																									Q
R																									R
S																									S
T																									T
U																									U
V																									V
W																									W
X																									X
Y																									Y
Z																									Z
1	2	3	4	5	6	7	8	9	10	11	12	13	14	15	16	17	18	19	20	21	22	23	24	25	

Land Surveyor / Firm / Address

John J. Studley, LS No. 4828

City of Cheyenne, City Surveyor

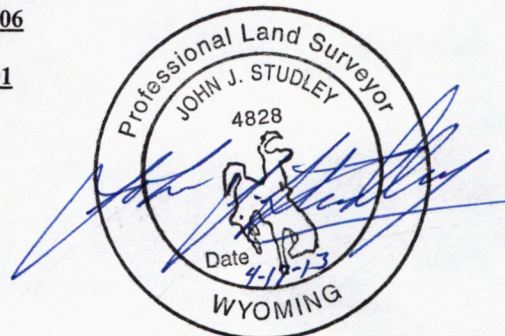
2101 O'Neil Ave., Room 206

Cheyenne, Wyoming 82001

Telephone: **307-637-6274**

This corner record was prepared by me or under my direction and supervision.

SEAL & SIGNATURE



Corner Name: Southwest corner - GLO Townsite Survey of Cheyenne City located in the Center of Section: 6 T 13 N, R 66 W; 6th P.M.
 Cross-Index No.: +/- C3 SBRPEPLS/PLSW: March 1994; PLSW January 1998

SURVEYOR'S REPORT

S.W. CORNER – G.L.O. SURVEY OF 1870 - This stone monument is actually the initial point of the survey, and was found on the topographic surface, tilted to the northeast. I found only passing references to this stone in modern day surveys, but the references were to "unknown origin" or "unidentified". Part of the reasoning for this was that the GLO notes do not describe this corner stone monument, so no one knew the exact size, shape or type of stone this corner ought to be. The reason for this was that this stone monument was set in place by the City Engineer in 1870 and was requested to be the starting point in the application for the Townsite Survey submitted to the GLO. The GLO notes only state "*Beginning at Stone Mound Corner*". I have not found survey notes in the City Engineer's Office describing this corner as found.

The found stone, being a 6"x7"x14" red sandstone, had very unique chisel markings that needed to be identified. On the westerly face of the stone we have the number "17" with a "V" under it, and on the easterly face the letter "B". Speaking with Jeff Jones, PLS No. 5910, he informed me that Thane H. Baldwin, PE&LS No. 19, early Laramie County Surveyor, often times marked his corner stones with a "B" to identify them as having been set by him. So I researched the Baldwin field survey books in the Laramie County archives and found in Book II, page 83, dated May 22, 1917, the traverse diagram of a boundary survey he conducted for R.S. VanTassle of Interior Heights, Cheyenne. This plat boundary is inclusive of the southwesterly corner of the GLO Townsite Survey, which T.H. Baldwin had labeled as corner "17" on the diagram. My deduction being that the "V" is the symbol he used for the term "corner".

In Book 512, page 16 of the Cheyenne City Engineer's Field Books, dated 11/3/1937, I found a survey tie from Roberts Addition (1889) to the "*S.W. Cor. Govt.*". These notes described "*The Cor. Is a stone in Fence Cor.*". Remnants of ancient fence lines were found in both the easterly and northerly directions, as shown in the field notes, confirming this site as a fence corner. Further survey ties to found monuments in the Roberts Addition (1889) matched within 0.3' when the stone was placed upright, and fell within 0.2' of being on line with modern plat lines to the north.

The stone is further preserved, encased within a 2' square concrete pad.

RECORDED PLATS OR REFERENCES

- ROBERTS PLACE ADDITION - 1889
- INTERIOR HEIGHTS ADDITION TO CHEYENNE - MARCH 3, 1890
- CHEYENNE TERRACE - MARCH 1958
- DAVID R. ROMERO SOUTH CHEYENNE COMMUNITY PARK - JAN. 8, 2009



Figure 1 - as found leaning NE



Figure 2 - rehabilitated with concrete pad.



Figure 3 - looking east at ancient fence remnants.



Figure 4 - Looking north at ancient fence post remnants.